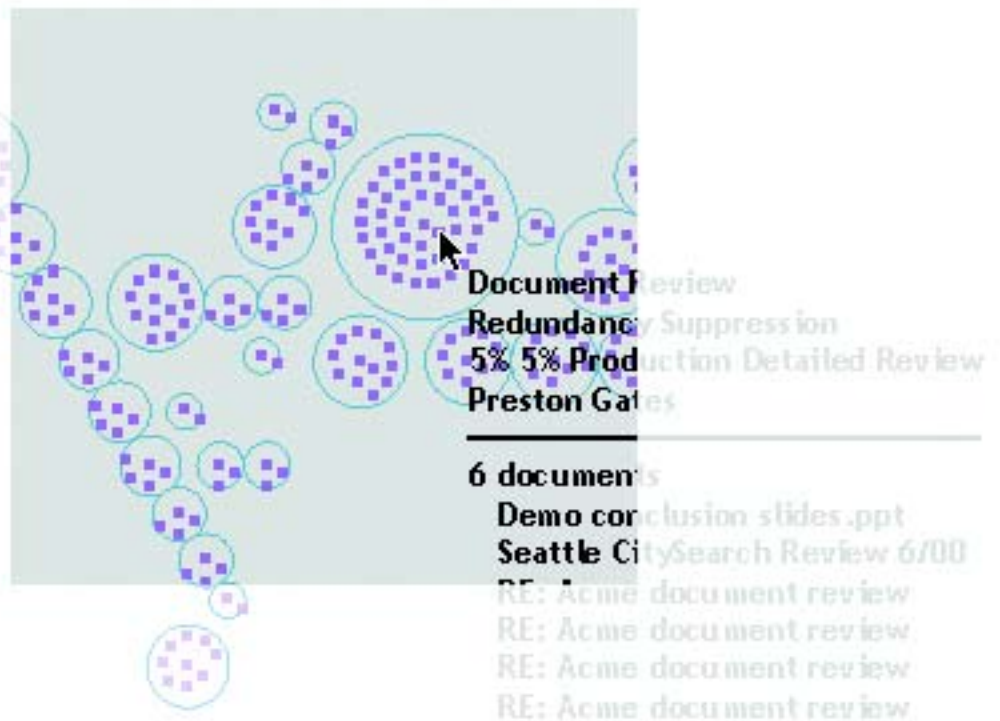



Warp Speed Electronic Discovery





Is it possible to effectively manage the cost, risk and process of producing digital data for discovery? Attenex has proven that it is.

Responding to a discovery request is a high stakes endeavor. This costly and frequently tedious process is rife with opportunities for mistakes. The inadvertent release of a trade secret or confidential corporate information can easily result in a malpractice claim or the loss of a respected client.

And the risks associated with discovery continue to increase. The explosive growth of electronic documents is threatening to overwhelm even the most efficient response processes. Courts are becoming less tolerant of "undue burden" claims and the scope of discovery can now encompass millions of electronic pages. The variety and sheer volume of digital information is challenging the skill of experienced litigation teams. Meanwhile the timelines for production and the ability to maintain a solid chain of evidence are tightening. Demands to better manage and reduce the cost of litigation fuel the complexity of electronic discovery. Soon, even current methods of electronic document review will be proven inadequate.

Gaining Control of Accuracy, Speed and Cost

A successful foundation for electronic discovery offers a clear ROI while ensuring quality, reducing risk and increasing productivity. From file acquisition to production, the Attenex™ Patterns™ E-Discovery Platform does just that. Broadly, the Attenex Patterns Platform focuses on three key areas of activity:

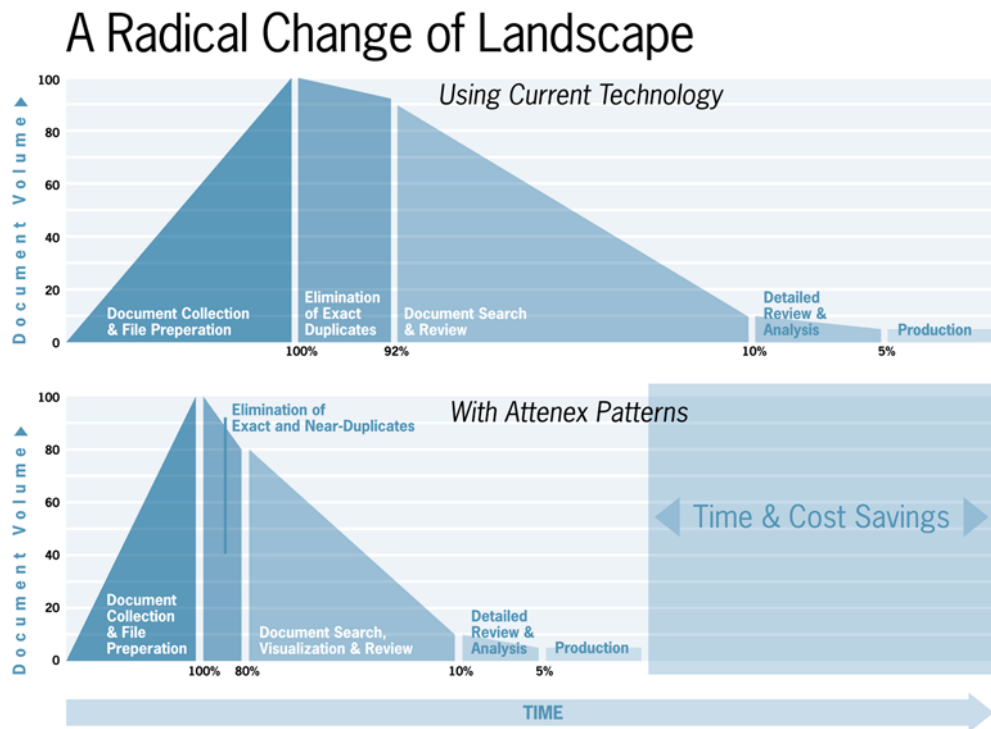
- Automating the bulk of the clerical and technical processing involved in acquiring and preparing electronic files for review
- Providing innovative visualization and search tools to enhance document review
- Maintaining a chain of evidence that is more reliable than manual methods and easy to audit.

As a result, customers using the Patterns E-Discovery Platform have dramatically improved their ability to manage the electronic discovery process.

Increased Speed. When Attenex Patterns E-Discovery Platform is used, the time dedicated to reviewing the discovery collection can be reduced from months to just weeks while improving the efficiency of the review by tenfold. Working under parameters set by legal professionals, Attenex Patterns automates the clerical and technical process of deduping, culling and setting aside file types and documents deemed irrelevant. This automation can rapidly reduce the number of documents requiring human review by 40% or more in just days—or even hours.

Efficiency and Savings:

With Attenex Patterns the time dedicated to reviewing discovery documents can be reduced from months to weeks while improving the efficiency tenfold. Automation of the clerical and technical process of file preparation alone can reduce the number of documents requiring human review by 40% in just days. Document visualization and innovative search tools increase productivity further.



Enhanced Quality. Attenex Patterns provides reviewers with breakthrough searching, browsing, visual mapping and display tools that enhance their understanding of the collection content and how individual documents relate to one another. This results in more thorough, thoughtful work in less time. With Attenex Patterns, quick reality checks and cost/benefit analysis can at last precede key strategic decisions such as whether to produce or resist production, settle or litigate.

Reduced Risk. Further peace of mind comes with the confidence of having a rock-solid chain of evidence. A database framework for meticulous document tracking and integrity validation covers both manual and automated processes and provides the foundation of the Attenex Patterns E-Discovery Platform. Each interaction with every document is fully detailed and logged, resulting in a highly-accurate, highly-detailed chain of evidence that is unmatched by manual methods.

Strong ROI. Attenex Patterns runs on standard equipment and PC platforms that most organizations already have in place—minimizing the initial cost and time for deployment. Licensing is typically usage-based. Fees result only when the tools are used, making it easy to associate these costs with specific matters. As a result, Attenex customers report seeing a dramatic increase in work capacity, as well as the ability to take on additional work, with no additional out-of-pocket costs. Further, the ability to predict, track and report on review status, productivity and cost improves accountability and helps to manage tightening litigation budgets.

Quite simply, Attenex Patterns allows litigation teams to successfully navigate the challenges of e-discovery, work smarter and faster and increase manageability of e-discovery costs and exposure.

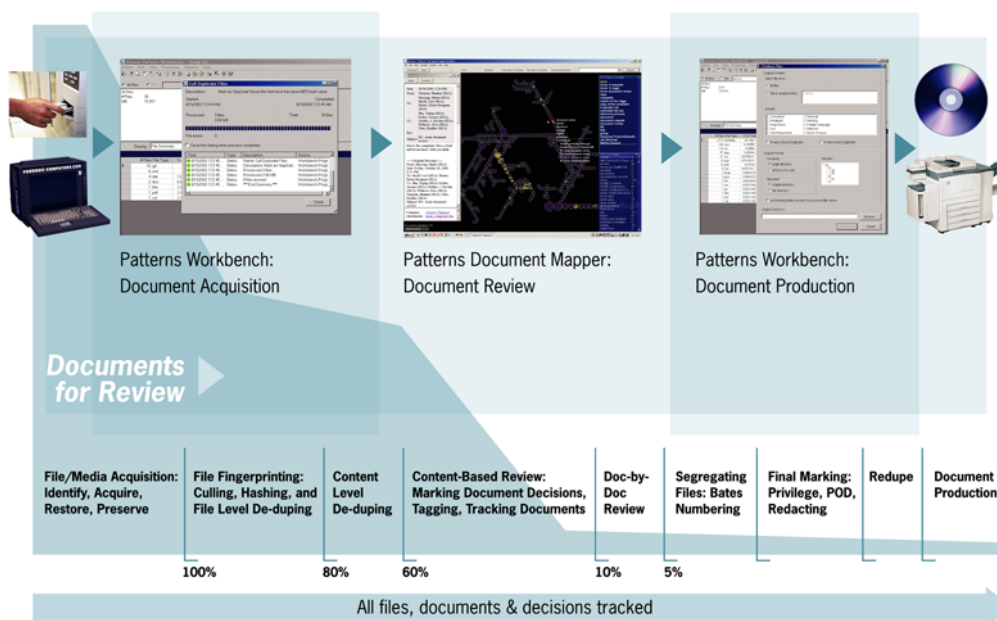
Succeed with the Attenex Patterns E-Discovery Platform

While the nature of every matter is different, each discovery response requires document acquisition, preparation, review, categorization and production. These activities are typically accomplished through manual processes that are augmented with technology tools as varied as Excel spreadsheets, search engines and decrypting software. Unfortunately, preparing and reviewing hundreds of thousands, if not millions, of digital files while meticulously preserving and accounting for each document has created problems that overwhelm even the most sophisticated teams and technology.

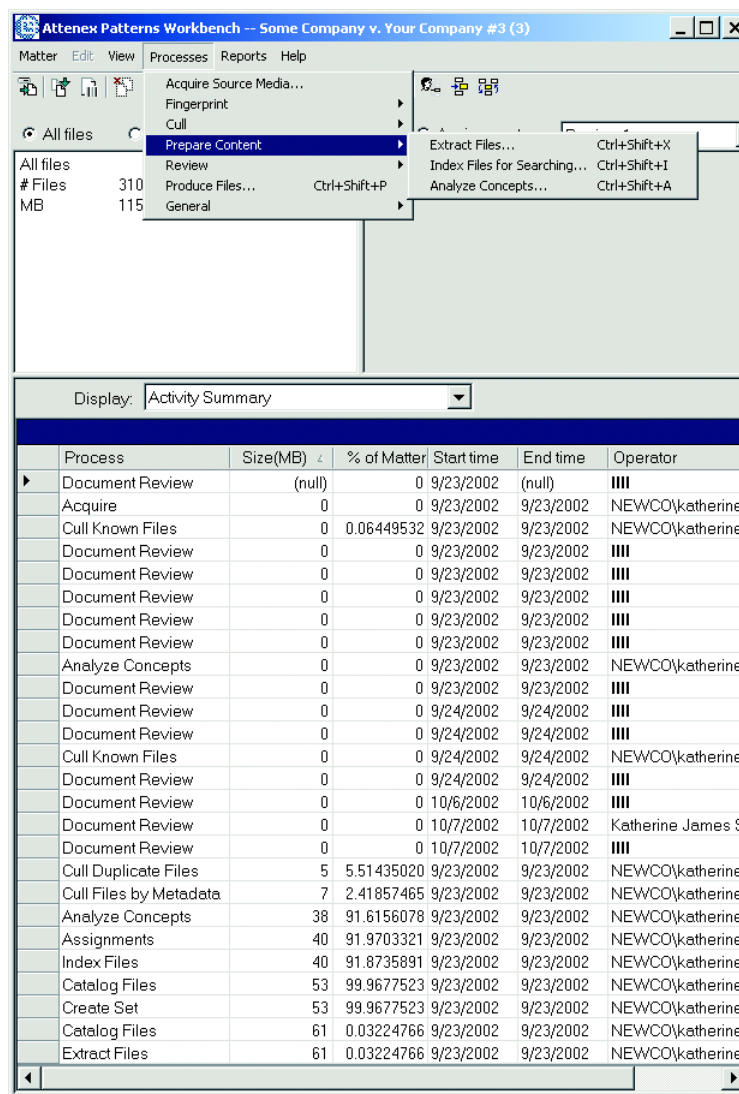
Attenex Patterns E-Discovery Platform offers a breakthrough solution. Encompassing two core applications, Attenex™ Patterns™ Workbench and Attenex™ Patterns™ Document Mapper, the E-Discovery Platform dramatically impacts both the speed and the quality of review. Under the complete control of legal professionals, Patterns Workbench automates those activities best done by computing devices—extracting data, fingerprinting each file, culling, indexing and preparing content for review. All legal judgments are left to lawyers, who, using Patterns Document Mapper, are able to accelerate the accurate review of documents using a revolutionary visualization display and the ability to search and assess relevance by both keyword and concept. This is important since responsive documents may or may not contain key words from the decision log. Patterns' unique automatic clustering technologies place related documents in close proximity to each other, whether or not they contain a specific key word.

Additionally, a robust file-tracking framework records both automatic and manual actions, facilitating 100% document preservation and creating an end-to-end audit trail.

Attenex Patterns Electronic Discovery Solution



From Start to Finish: Attenex Patterns E-Discovery Platform provides an end-to-end electronic discovery solution. Patterns Workbench, the first module in the E-Discovery Platform, rapidly acquires, fingerprints, culls, analyzes and indexes content in preparation for review. Patterns Document Mapper then provides reviewers with state-of-the-art tools to review and mark the document set. Files can then be reduped and quickly produced in response to the RFP.



Attenex Patterns Workbench File Processing Functions:

Acquire Source Media

Fingerprint
Catalog Files
Bates Number Files

Cull

Cull Duplicate Files
Cull Known Files
Cull Files by Metadata

Prepare Content

Extract Files
Index Files for Searching
Analyze Concepts

Review

Search Files
Document Mapper
Mark Files

Produce

Identify User
Segregate
Log Manual Process

Delivering Rapid, Accurate Prep and Easily Audited Responses

Initially the sheer size of the discovery collection can be overwhelming. Hundreds of megabytes, gigabytes or even terabytes of application files, duplicate documents, repetitive email strings, system files and every conceivable type of media—from back up tapes to mirrored hard drives—are included in the initial acquisition of information. The challenge is to quickly and cost-effectively identify duplicate files and set aside data that is deemed clearly irrelevant to the matter.

Patterns Workbench easily draws out every type of source data and logs it into the Patterns database. Using configurable parameters set by the project manager, Patterns Workbench is able to automatically suppress system, application or specific file types and dedupe at the email, file, and content level, often reducing the discovery collection by 40% or more in just hours.

Precise Document Tracking.

Litigation teams are required by the court to document, preserve and report on the state of every document in the discovery collection. Given the volume of electronic documents and the activities and decisions that must be tracked in association with them, an automated system, with guides that encompass offline activities, is more accurate and reliable than manual systems.

The Patterns E-Discovery Platform uses a unique file-tracking framework that encompasses both automated and manual processes. The result is a data log for each document—detailing who did what and when—that is maintained throughout the discovery process. Hashing, file-level Bates numbering and other techniques are employed to verify the integrity of every file and automatically construct a solid, defensible chain of evidence. The same tracking framework, built on a database platform, provides virtually unlimited reporting options, ensuring that the chain of evidence can be easily and quickly audited at any time.

Thorough, Rapid Review Prep. Unlike other systems, Patterns Workbench automatically recognizes file types that are digital containers for other files, such as .ZIP or .PST, and recursively unpacks them until all individual files are extracted. For example, without human intervention, Patterns Workbench will extract the 500 email messages contained in one .PST file, index and keyword analyze them, and present the individual documents to the reviewer in a visual map. Embedded or attached documents contained within an email message are also extracted and made available in the same manner, but remain linked to each other in the Patterns database. Automating the frequently manual process of unpacking one level of container file at a time substantially eliminates the time and effort involved in the pre-review period.

Analyzing & Indexing the Content. In final preparation for document review, Patterns Workbench automatically indexes the words in every document for keyword searching and, using Attenex and third-party patented technologies, organizes the discovery collection around common concepts. Nouns and noun phrases contained in the documents are used to discern and cluster similar files. For example, documents containing words related to jewelry—diamonds, cut, color and clarity—would cluster separately from documents discussing baseball—diamonds, bats, gloves and balls. By allowing the documents to automatically describe themselves, the system creates a database of the concepts contained in the collection. When these concepts are analyzed and the documents organized by similar content, the need to create a collection taxonomy is eliminated and an accurate review process is greatly accelerated.

Visualize Fast, Insightful Electronic Review

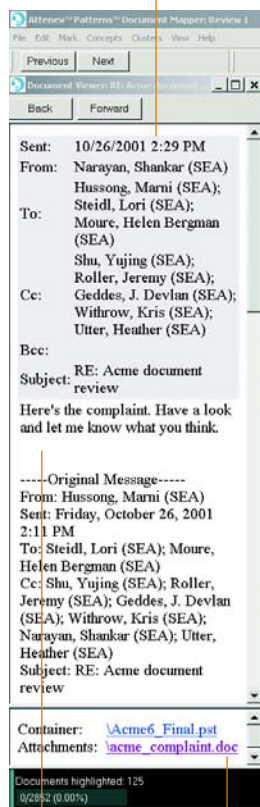
Attenex Patterns Document Mapper speeds and enhances the quality of the review process, providing state-of-the-art tools for reviewers to organize, display, search and categorize documents. Any number of reviewers can simultaneously work on subsets of the review set, rapidly and accurately isolating and marking relevant documents. All legal judgments are left to the litigation team.

Seeing It All. Patterns Mapper significantly enhances a reviewer's productivity simply by putting everything they need together on the screen. Three levels of review information—the automatically-generated list of concepts contained in the document subset, a visual map of how the documents relate to each other and the selected document—are all displayed at once. This elegant hierarchy significantly decreases the time it takes to isolate and mark relevant material and set aside whole clusters of documents not responsive to the RFP.

All documents and email, regardless of source application type, are displayed in an application viewer. Microsoft Word, PowerPoint, Excel, PDF, HTML, RTF and other common formats are displayed in their native format—allowing document components such as embedded web links, annotations, animations, video and sound to be active and available to the reviewer.

Mapping the Relationships. At last, reviewers can see a large review set in an easy to use map that uses proximity to indicate how individual documents relate to one another. All documents are displayed according to the similarity of the concepts they contain—with documents containing closely related subjects clustered together. For example, documents containing the nouns fiber, thread, fabric and material would cluster separately from those containing nouns relating to fiber optics—high speed transmission, gigabyte, multiplexing, etc.

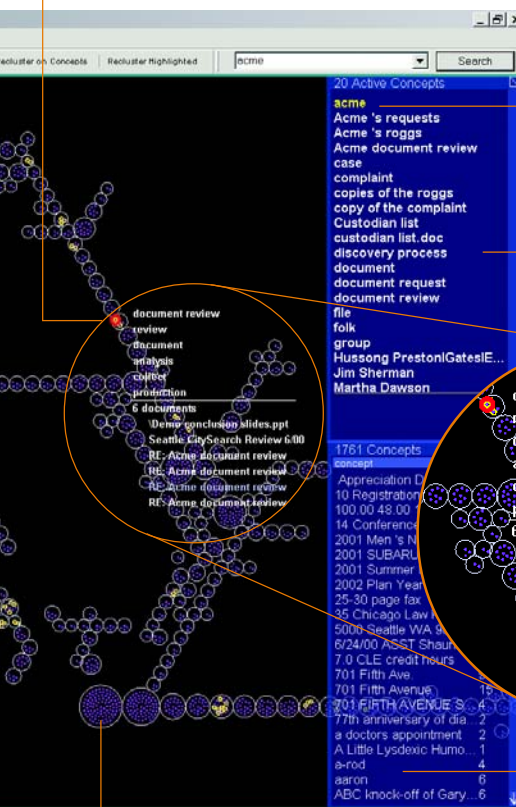
Document Viewer



Email Message

Email Attachment

Selected Document



Cluster of Related Documents

Selected Concept

Document Concepts

Concepts from Document Collection

Clicking on a specific cluster of documents reveals a floating list of the concepts contained within that group, as well as individual document titles or subject lines. Clicking on a specific document dot or title displays the actual document for review. Selecting from any of nine customizable categories, reviewers use their mouse to mark either an individual document or cluster of documents. Once a "hot doc" is identified, the user can also instruct Patterns to automatically reorient the map to cluster the rest of the documents by degree of relatedness to the chosen concept. It takes just seconds. Even a specific, highly responsive document, such as the RFP itself or a keyword list, can be used as the "anchor document" around which the remaining documents can automatically recluster.

Searching Deeper. Typically searching by a keyword, or set of keywords, illuminates only those documents containing the specified term. Patterns Document Mapper goes further, clustering documents whose content closely matches the target keyword around the highlighted documents. While not actually containing the search term, these may be critical documents that can be easily missed when using keyword searching alone. A concept search does much the same as a keyword search, but also reveals in close proximity documents covering all closely related ideas, whether or not they contain a specific keyword. Having both search techniques available delivers a significant increase in the quality and speed of a reviewer's work, while reducing the risk that a relevant document will be missed.



Using the Patterns Document Mapper, reviewers are able to more efficiently work through the discovery collection – easily locating documents similar to those that are relevant, or large bodies of irrelevant documents to set aside. Thus empowered, reviewers can quickly work through thousands of documents at once and deliver a higher quality of work in a significantly shorter period of time than ever before.

Flexibility to Meet Many Needs

The Attenex Patterns E-Discovery Platform has the built-in flexibility to accommodate the unique needs of each individual matter, be it large or small, and allows user-defined criteria to meet specific workflow preferences and methodologies. Use Attenex Patterns to:

- **Conduct Snapshot Reviews** – Rapidly load and review a subset of the possible discovery request—typically the email and documents of those most likely involved in the matter—and make fast, on-target strategy decisions based on real information. In one snapshot assessment, Attenex Patterns enabled reviewers to quickly assess 13,700 emails—the equivalent of 500 megabytes of data or 19 banker's boxes of documents—and in just days identify 668 relevant emails at a cost to the client of less than \$5,000, including lawyer's fees.
- **Complete Full Initial Reviews** – Work through a large number of files, removing grossly irrelevant documents to quickly isolate the pool of responsive and potentially responsive documents up to ten times faster than other review methods. Lawyers using Attenex Patterns for discovery request responses can save their clients as much as 30% or more over traditional methods, delivering a tight, complete set of responsive documents in record time for the development and support of litigation strategy.

About Attenex Corporation

Attenex (pronounced ah-TEN-ex) Corporation is a Seattle-based business-to-business software solutions supplier focused on improving productivity in document-intensive processes in the legal professions. Preston Gates & Ellis LLP, an *AmLaw 100* firm that has pioneered innovative approaches to the use of technology in law, formed the company in 2001. Attenex does not practice law. The company name, Attenex Corporation, derives from its mission to develop and commercialize ground-breaking software products that improve lawyer productivity "at 10x" over best practice methods.

Attenex Corporation
701 Fifth Avenue
Suite 1450
Seattle, WA 98104
Phone: 206.386.5840
Fax: 206.386.5841
www.attenex.com

Learn more about Attenex and the Patterns E-Discovery Platform at www.attenex.com or call for a product demo:

Pauline Tyack: 206.230.5660 or pauline@attenex.com

Terry Ross: 206.386.5855 or terry@attenex.com